

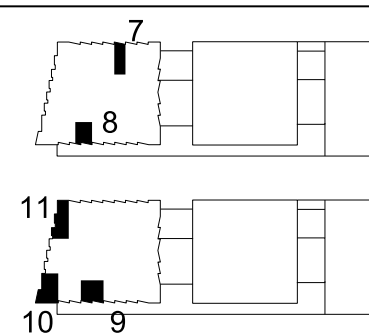
This drawing is copyright
Do not scale off dimensions.
All dimensions to be checked on site by contractor.
Contractor to report any dimensional discrepancies,
errors or omissions prior to commencing on site.

0.5 0 1 2 3m

NOTE:

NORTH

Rev	Date	Description
-	15/06/2018	Full Planning Application



Project Title
Kensington Forum Hotel
Kensington, London

Status
PLANNING

Drawing Title
Typical Hotel Layout Plans
(Page 2)

Job No	Scale	Date
10106	1:50@ A1	JAN 2019

Drawing No	Revision
10106-A-DRG-Z2-F200-2101-PL	-

simpsonhaugh

MANCHESTER
Riverside, 4 Commercial St
Manchester M15 4RQ
+44 (0)161 835 2345
www.simpsonhaugh.com

LONDON
5-8 Roberts Place
London EC1R 9BB
+44 (0)20 7549 4000
mail@simpsonhaugh.com